

FOR LEASE ±4,960 SF

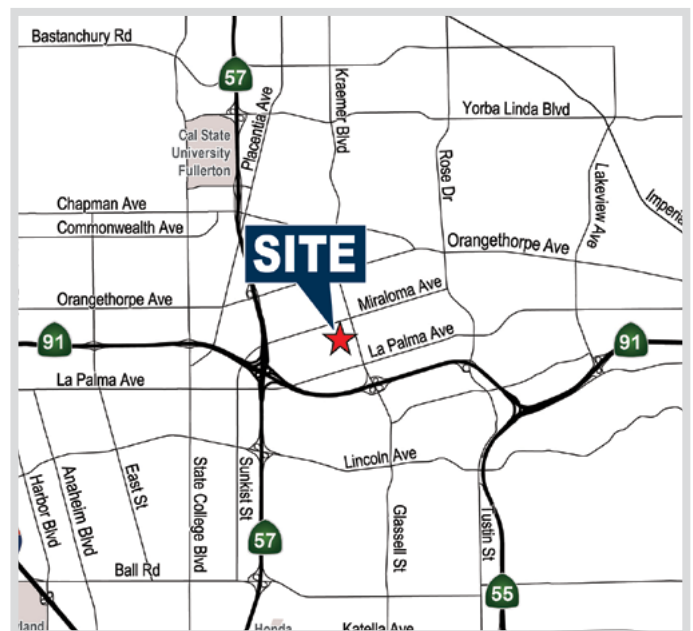
FREESTANDING INDUSTRIAL BUILDING

1231 N. Simon Cir., Anaheim, CA



Property Features

- ± 900 Sq. Ft. of Office Area
- 12' Warehouse Clearance
- 800 Amps of 277/480 Volt Power
- 8 Parking Stalls
- Two (2) Ground Level Doors (12'x10')
- Fire Sprinklered
- Fenced Yard
- Low Cost Anaheim Utility Rates
- Located in Prestigious Canyon Corridor
- Convenient Access to Riverside (91), Pomona (57) and Newport (55) Freeways



MIKE HEFNER, SIOR
Executive Vice President
714.935.2331
Lic. #00857352
mhefner@voitco.com

BRENDEN HEFNER
Senior Associate
714.978.2326
Lic. #02114046
bhefner@voitco.com

Voit
REAL ESTATE SERVICES

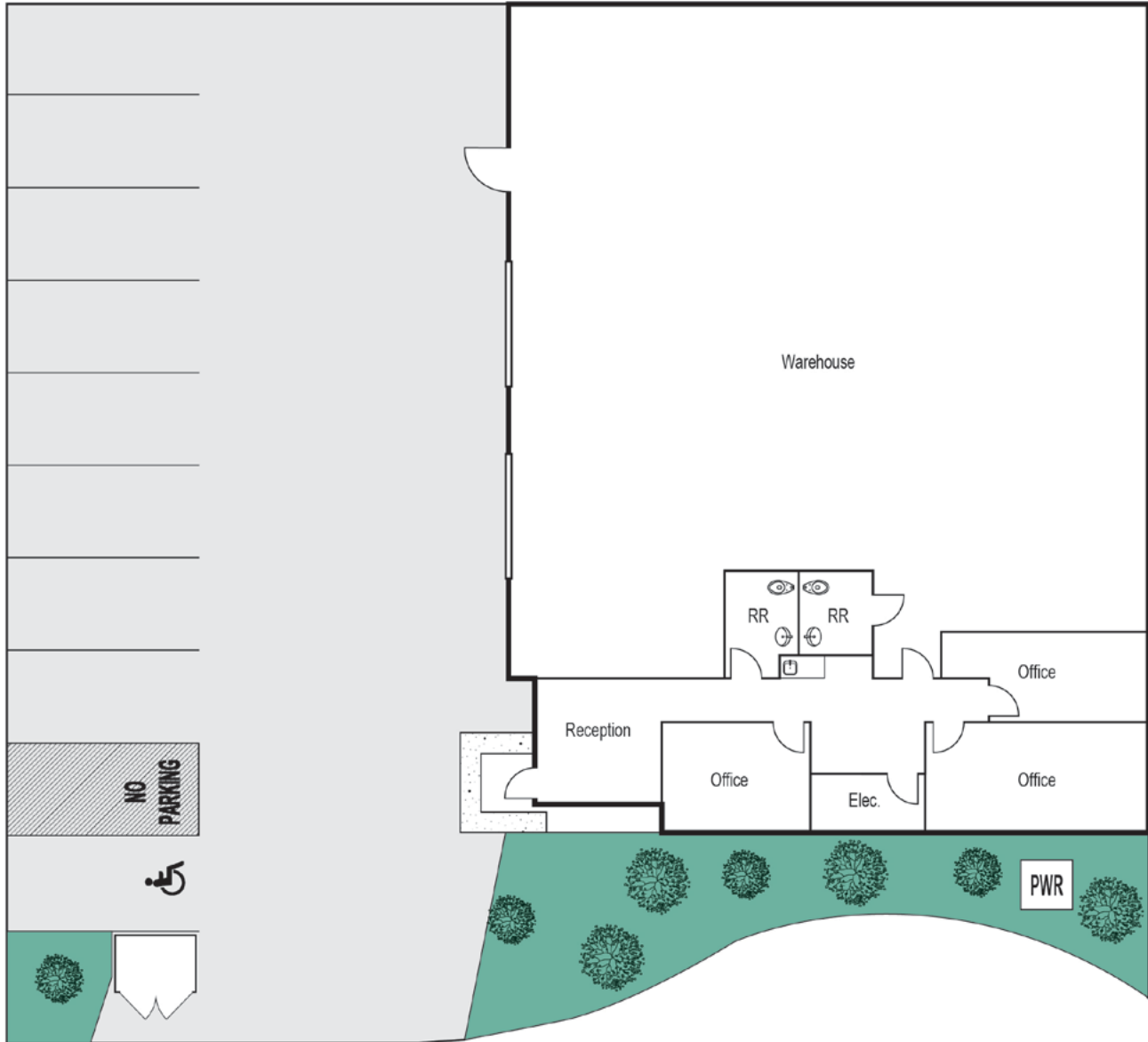
**HEFNER
VERNICK
TEAM**

FOR LEASE ±4,960 SF

FREESTANDING INDUSTRIAL BUILDING

1231 N. Simon Cir., Anaheim, CA

SITE PLAN



* Site plan not to scale.

MIKE HEFNER, SIOR
Executive Vice President
714.935.2331
Lic. #00857352
mhefner@voitco.com

BRENDEN HEFNER
Senior Associate
714.978.2326
Lic. #02114046
bhefner@voitco.com

Voit
REAL ESTATE SERVICES

HV HEFNER
VERNICK
TEAM

2400 E. Katella Ave., Suite 750, Anaheim, CA 92806 • 714.978.7880 • 714.978.9431 Fax

www.HefnerVernickTeam.com

Licensed as Real Estate Broker by the CA Bur of Real Estate. The information contained herein has been obtained from sources we deem reliable. While we have no reason to doubt its accuracy, we do not guarantee it. ©2023 Voit Real Estate Services, Inc. All Rights Reserved. License #01991785.