

FOR LEASE ±8,780 SF

INDUSTRIAL BUILDING

1540 S. Lewis Street, Anaheim



Property Features

- ±8,780 Square Foot High Image Building
- ±4,000 Square Feet Class A Office Improvements
- Fantastic Anaheim Stadium Location
- 19 Parking Stalls (2.16:1 Ratio)
- One (1) 10' x 12' Ground Level Loading Door
- 16' of Minimum Warehouse Clearance
- 400 Amps of Power, 120/208 Volt (Verify)
- Fire Sprinklers
- Business Park Environment
- High Image Freestanding Building
- Numerous Restaurant Amenities Nearby
- Excellent Access to the 5, 57 & 22 Freeways



MIKE VERNICK, CCIM, SIOR

Senior Vice President
714.935.2354
Lic. #01420885
mvernick@voitco.com

MIKE HEFNER, SIOR

Executive Vice President
714.935.2331
Lic. #00857352
mhefner@voitco.com

Voit
REAL ESTATE SERVICES

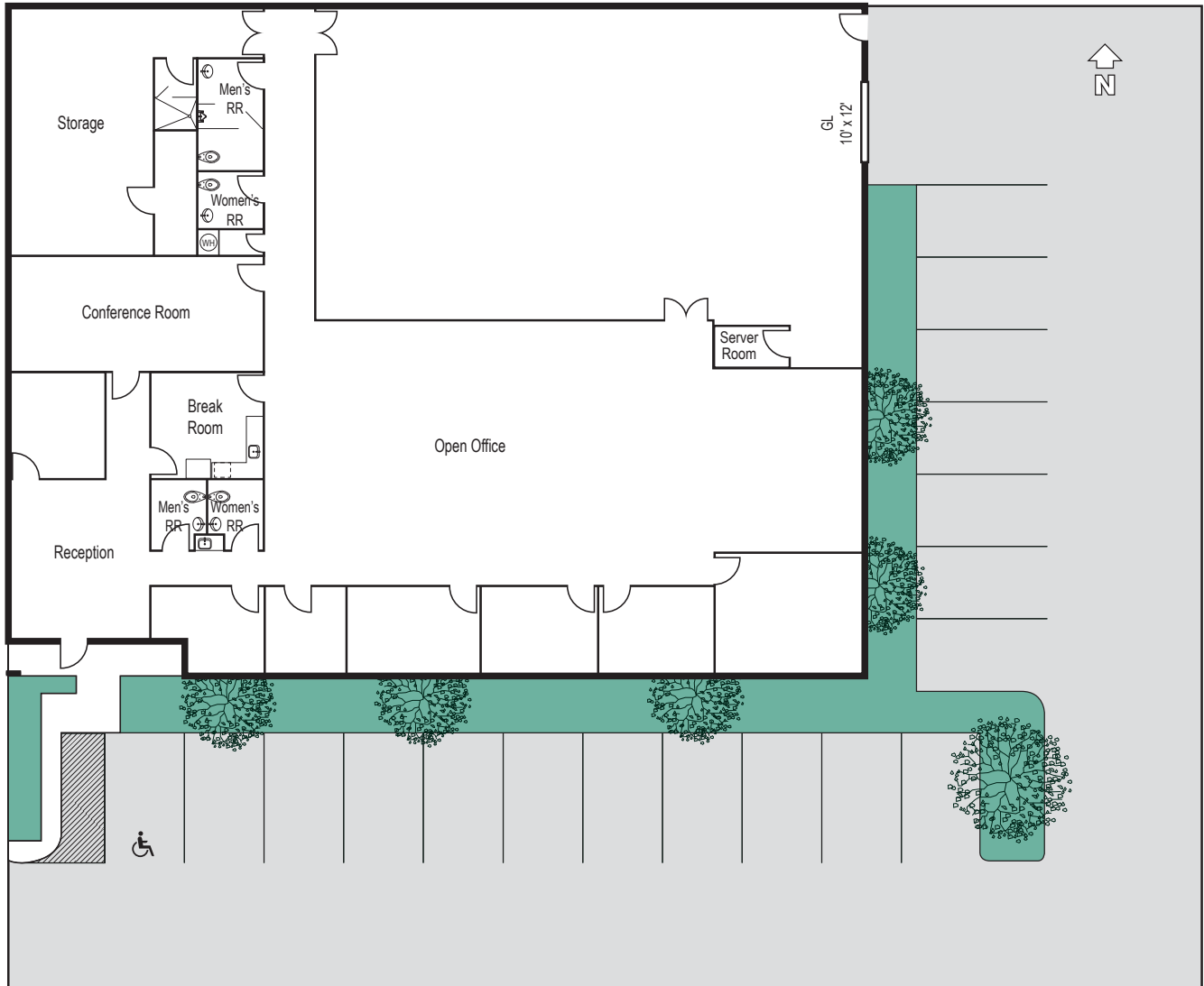
HV HEFNER
VERNICK
TEAM

FOR LEASE ±8,780 SF

INDUSTRIAL BUILDING

1540 S. Lewis Street, Anaheim

SITE PLAN



MIKE VERNICK, CCIM, SIOR

Senior Vice President

714.935.2354

Lic. #01420885

mvernick@voitco.com

MIKE HEFNER, SIOR

Executive Vice President

714.935.2331

Lic. #00857352

mhefner@voitco.com

Voit

REAL ESTATE SERVICES



**HEFNER
VERNICK
TEAM**

2400 E. Katella Ave., Suite 750, Anaheim, CA 92806 • 714.978.7880 • 714.978.9431 Fax

Licensed as Real Estate Broker(s) and Salesperson by the CA Bur of Real Estate. The information contained herein has been obtained from sources we deem reliable. While we have no reason to doubt its accuracy, we do not guarantee it. ©2023 Voit Real Estate Services, Inc. All Rights Reserved. License #01991785.

www.VoitCo.com