

# FOR SALE

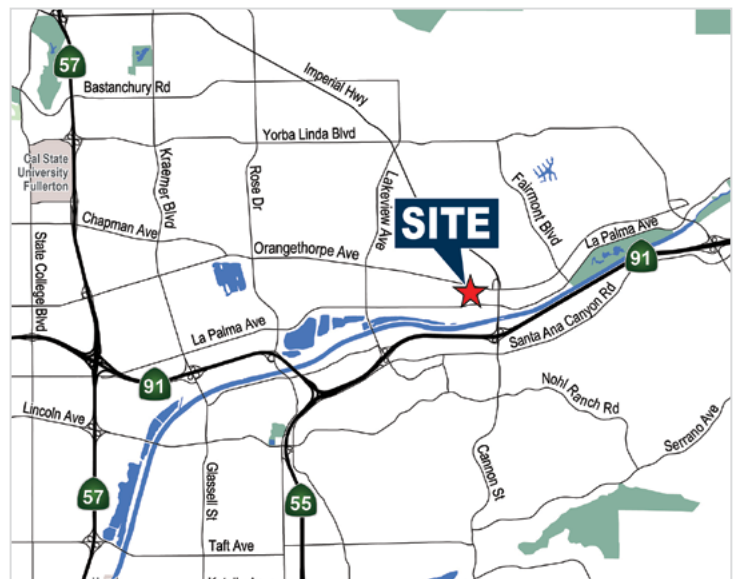
7,382 SF INVESTOR OR OWNER/USER PURCHASE OPPORTUNITY

5437 E La Palma, Anaheim, CA



## Property Features

- 7,382 Square Foot High Image Industrial Condo
- 3,000 Square Feet of Open Ceiling Creative Office Space (newly constructed in 2015)
- 18 Reserved Parking Stalls
- Two (2) Ground Level Loading Doors
- Fire Sprinklers
- 600 Amps of Power (Verify)
- 16 Feet of Minimum Warehouse Clearance
- Excellent Access to 91, 55 and 57 Freeways
- Professionally Managed Business Park Environment
- Seller Can Execute a Leaseback



### MIKE VERNICK, CCIM, SIOR

Senior Vice President, Partner

714.935.2354

mvernick@voitco.com

Lic. #01420885

**Voit**  
REAL ESTATE SERVICES

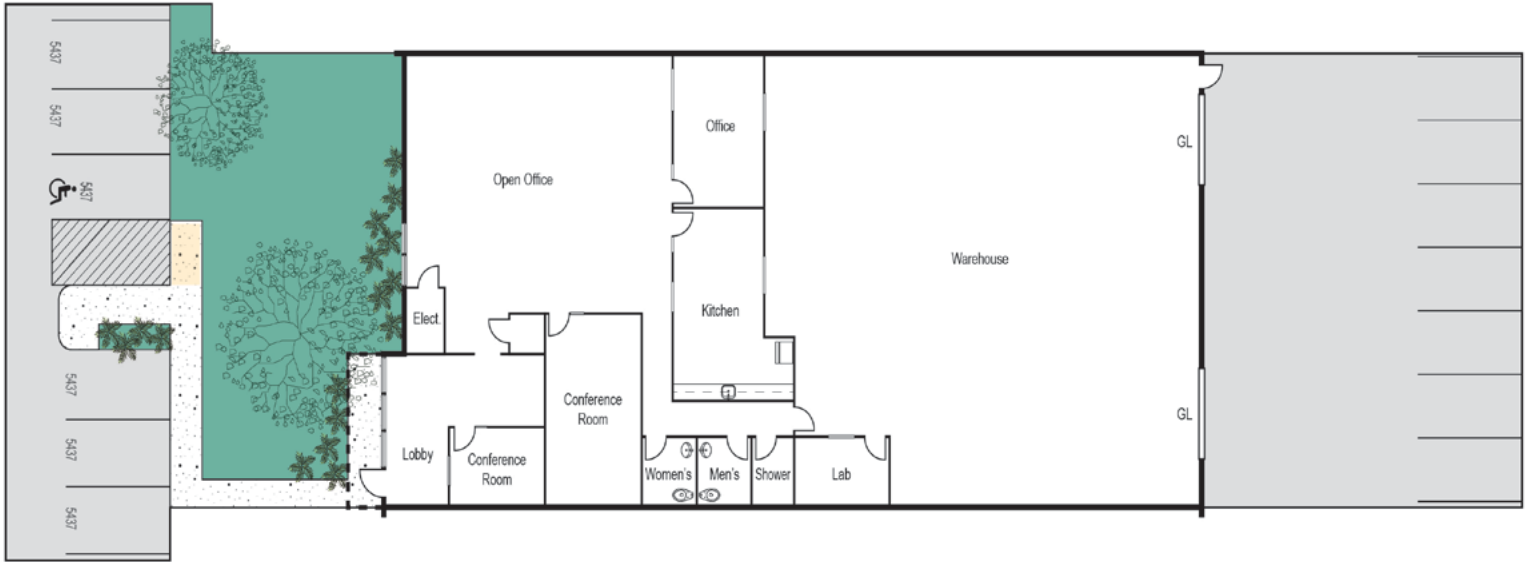
**HV** HEFNER  
VERNICK  
TEAM

# FOR SALE

7,382 SF INVESTOR OR OWNER/USER PURCHASE OPPORTUNITY

5437 E La Palma, Anaheim, CA

## SITE PLAN



\*Additional Reserved Stalls Located In Other Areas Of The Project



### MIKE VERNICK, CCIM, SIOR

Senior Vice President, Partner

714.935.2354

mvernick@voitco.com

Lic. #01420885

**Voit**  
REAL ESTATE SERVICES

**HV** HEFNER  
VERNICK  
TEAM

2400 E. Katella Ave., Suite 750, Anaheim, CA 92806 • 714.978.7880 • 714.978.9431 Fax

www.HefnerVernickTeam.com

Licensed as Real Estate Broker(s) and Salesperson by the CA Bur of Real Estate. The information contained herein has been obtained from sources we deem reliable. While we have no reason to doubt its accuracy, we do not guarantee it. ©2020 Voit Real Estate Services, Inc. All Rights Reserved. License #01991785.