

# FOR LEASE ±9,510 SF

## FREESTANDING INDUSTRIAL BUILDING

1185 E. Stanford Court, Anaheim, CA



### Property Features

- ±9,510 SF Freestanding Building
- ±2,240 SF of Office Space (Remodeled To Suit)
- 18' Warehouse Clearance
- Fenceable Yard Area
- Two (2) Ground Level Doors
- Bonus Mezzanine Area
- 400 Amps, 120/208 Volt Power
- Prime Stadium Location
- Immediate Access to the 5 and 57 Freeways



**MIKE HEFNER, SIOR**  
Executive Vice President  
714.935.2331  
Lic. #00857352  
mhefner@voitco.com

**BRENDEN HEFNER**  
Senior Associate  
714.935.2326  
Lic. #02114046  
bhefner@voitco.com

**Voit**  
REAL ESTATE SERVICES

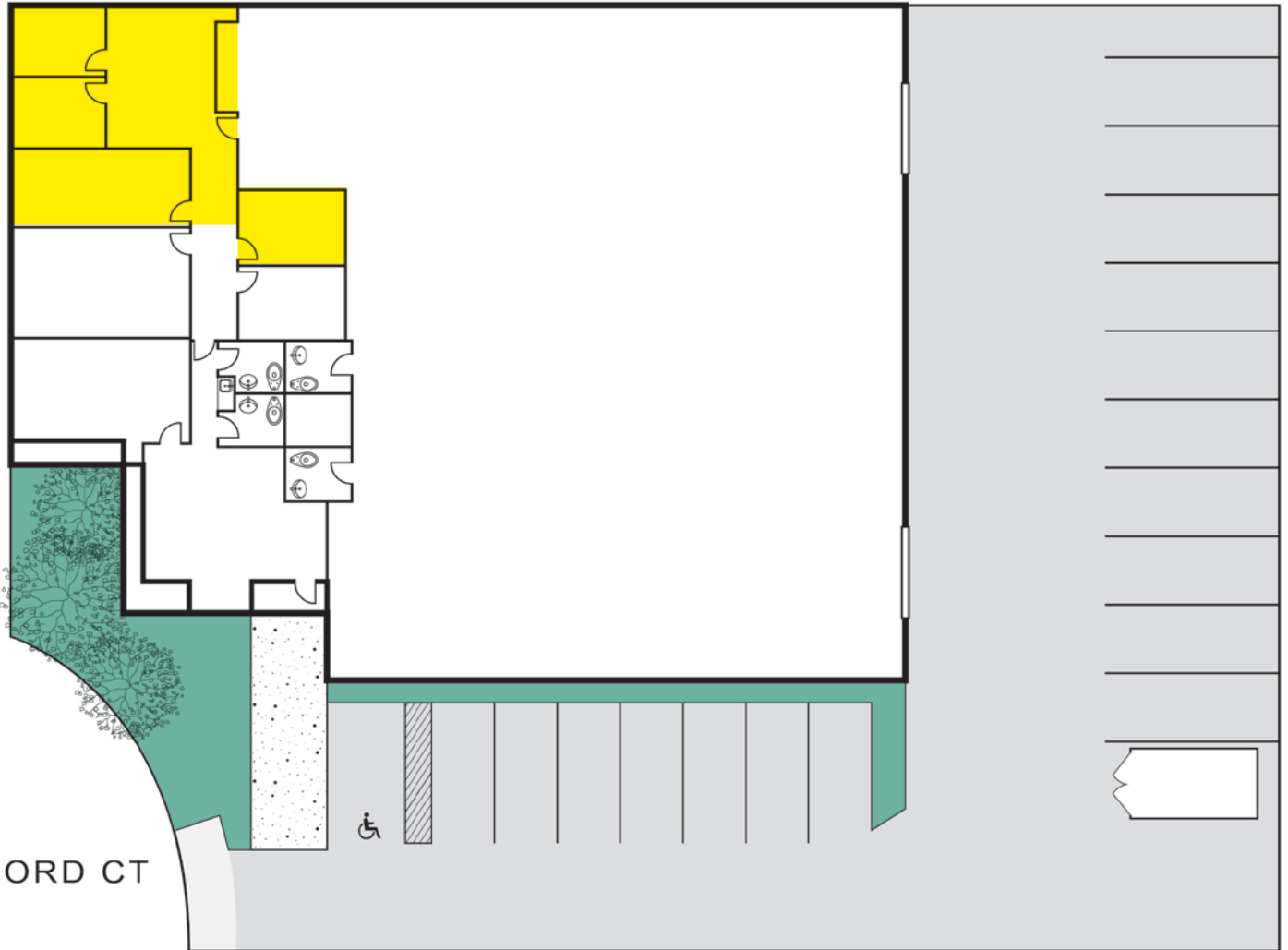
**HV** HEFNER  
VERNIK  
TEAM

# FOR LEASE ±9,510 SF


## FREESTANDING INDUSTRIAL BUILDING

1185 E. Stanford Court, Anaheim, CA

### SITE PLAN



STANFORD CT

 Can Be Remodeled / Demolished to Suit.

**MIKE HEFNER, SIOR**  
Executive Vice President  
714.935.2331  
Lic. #00857352  
mhefner@voitco.com

**BRENDEN HEFNER**  
Senior Associate  
714.935.2326  
Lic. #02114046  
bhefner@voitco.com

**Voit**  
REAL ESTATE SERVICES

**HV** HEFNER  
VERNICK  
TEAM

2400 E. Katella Ave., Suite 750, Anaheim, CA 92806 • 714.978.7880 • 714.978.9431 Fax

www.VoitCo.com

Licensed as Real Estate Broker and Salesperson by the CA Bur of Real Estate. The information contained herein has been obtained from sources we deem reliable. While we have no reason to doubt its accuracy, we do not guarantee it. ©2023 Voit Real Estate Services, Inc. All Rights Reserved. License #0133376.