

325 N. PUENTE STREET, UNIT D

Brea, California 92821

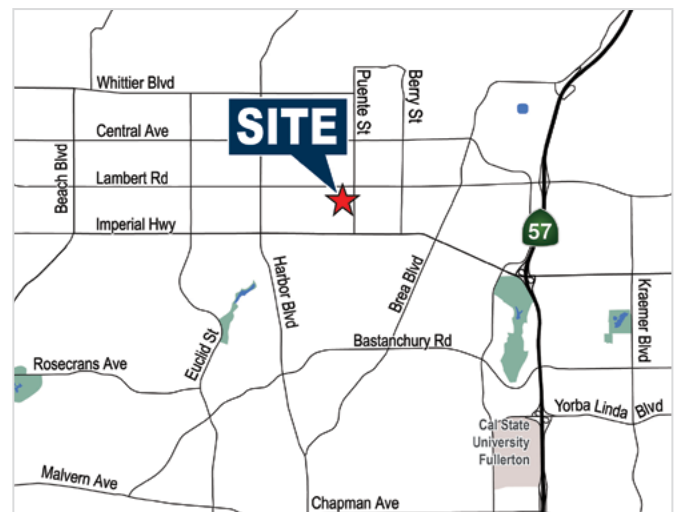
FOR LEASE

±3,459 SQ. FT.



PROPERTY FEATURES

- ± 3,459 Sq. Ft. Industrial Unit
 - ± 2,074 Sq. Ft. High Image Office Space
 - ± 1,385 Sq. Ft. Warehouse Space
- End / Corner Unit
- 22' Clear Height
- Extensive Glass Line
- Open Ceiling / "Creative Office"
- Excellent Truck Access
- Drive Around Building
- 2 GL Warehouse Doors
- Power - 225 Amps / 3 Phase (verify)
- Fire Sprinklers



MIKE VERNICK, CCIM, SIOR

Senior Vice President

714.935.2354

MVernick@voitco.com

Lic #01420885

Voit
REAL ESTATE SERVICES

HV HEFNER
VERNICK
TEAM

2400 E. Katella Avenue, Suite 750

Anaheim, CA 92806

www.VoitCo.com

Licensed as a Real Estate Salesperson by the CA Bur of Real Estate. The information contained herein has been obtained from sources we deem reliable. While we have no reason to doubt its accuracy, we do not guarantee it. ©2022 Voit Real Estate Services, Inc. All Rights Reserved. Lic #01991785.

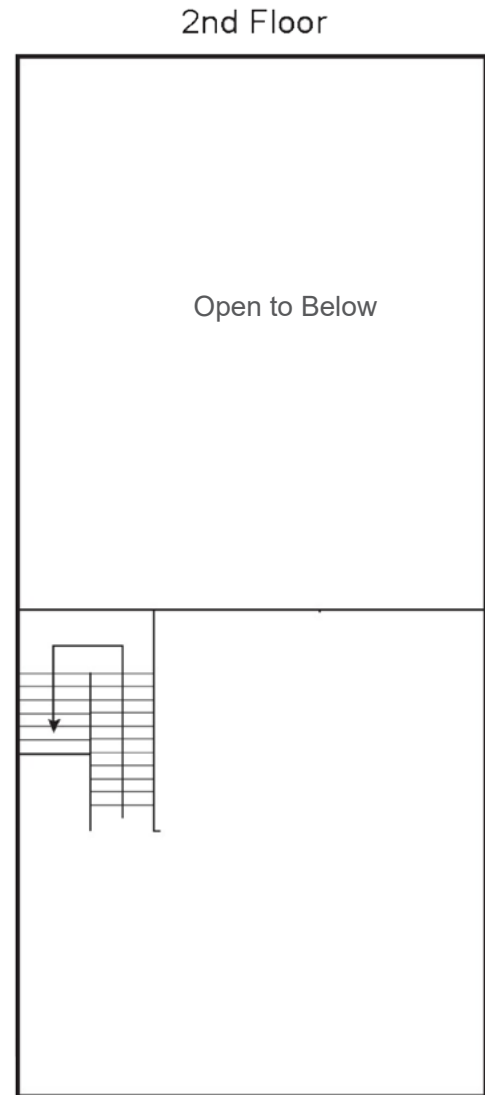
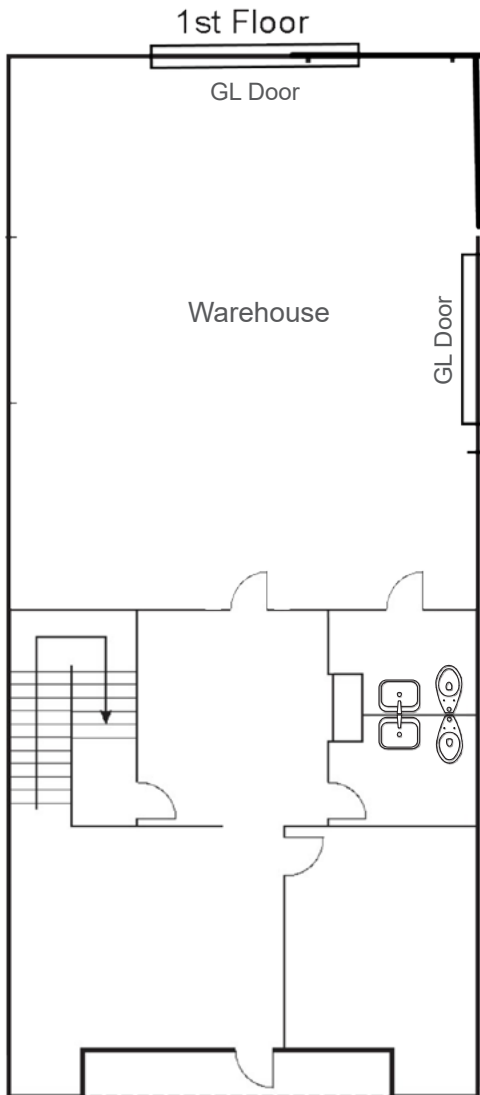
325 N. PUENTE STREET, UNIT D

Brea, California 92821

FOR LEASE

±3,459 SQ. FT.

FLOOR PLAN



Note: Floor Plan not to scale.

MIKE VERNICK, CCIM, SIOR

Senior Vice President

714.935.2354

MVernick@voitco.com

Lic #01420885

Voit
REAL ESTATE SERVICES

HV HEFNER
VERNICK
TEAM

2400 E. Katella Avenue, Suite 750

Anaheim, CA 92806

www.VoitCo.com

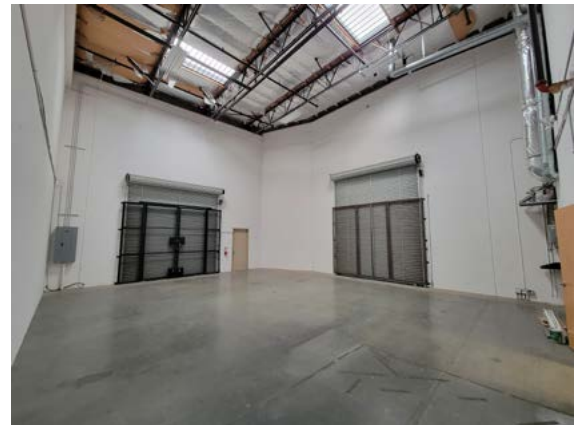
Licensed as a Real Estate Salesperson by the CA Bur of Real Estate. The information contained herein has been obtained from sources we deem reliable. While we have no reason to doubt its accuracy, we do not guarantee it. ©2022 Voit Real Estate Services, Inc. All Rights Reserved. Lic #01991785.

325 N. PUENTE STREET, UNIT D

Brea, California 92821

FOR LEASE

±3,459 SQ. FT.



MIKE VERNICK, CCIM, SIOR

Senior Vice President

714.935.2354

MVernick@voitco.com

Lic #01420885

Voit
REAL ESTATE SERVICES

HV HEFNER
VERNICK
TEAM

2400 E. Katella Avenue, Suite 750

Anaheim, CA 92806

www.VoitCo.com

Licensed as a Real Estate Salesperson by the CA Bur of Real Estate. The information contained herein has been obtained from sources we deem reliable. While we have no reason to doubt its accuracy, we do not guarantee it. ©2022 Voit Real Estate Services, Inc. All Rights Reserved. Lic #01991785.