

# FOR LEASE

±18,104 Square Feet

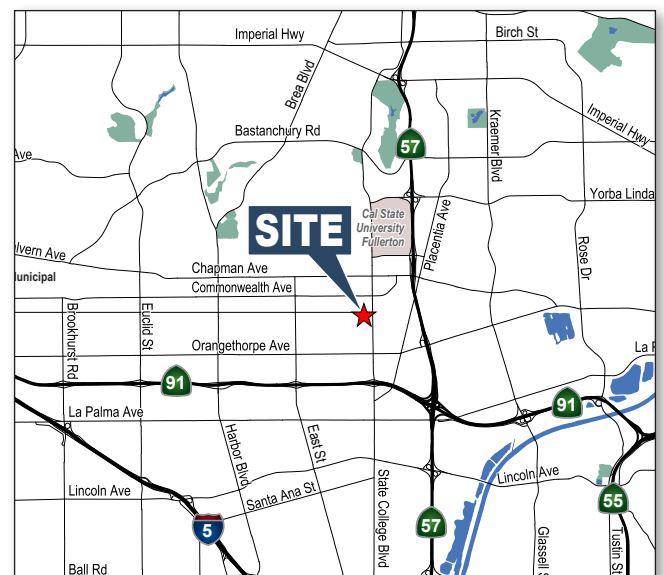
**Voit**  
REAL ESTATE SERVICES



## 2300 E. Valencia Drive, Fullerton

### Property Features

- ±1,500 Sq. Ft. of Office Area
- Two (2) 10' x 12' Ground Level Doors
- One (1) Interior Truckwell
- 1,600 Amps 120/208 Volts of Power
- 18' Warehouse Clearance
- Metal Halide Warehouse Lighting
- Two (2) Shop Restrooms
- Warehouse Space Heaters
- Convenient Access to Pomona (57), Santa Ana (5) and Riverside (91) Freeways



**Mike Hefner, SIOR**  
Executive Vice President  
714.935.2331  
mhefner@voitco.com  
Lic #00857352

2400 E. Katella Avenue, Suite 750, Anaheim, CA 92806 • 714.978.7880 • 714.978.9431 Fax • Lic #01333376 | www.voitco.com

Real People. Real Solutions.®

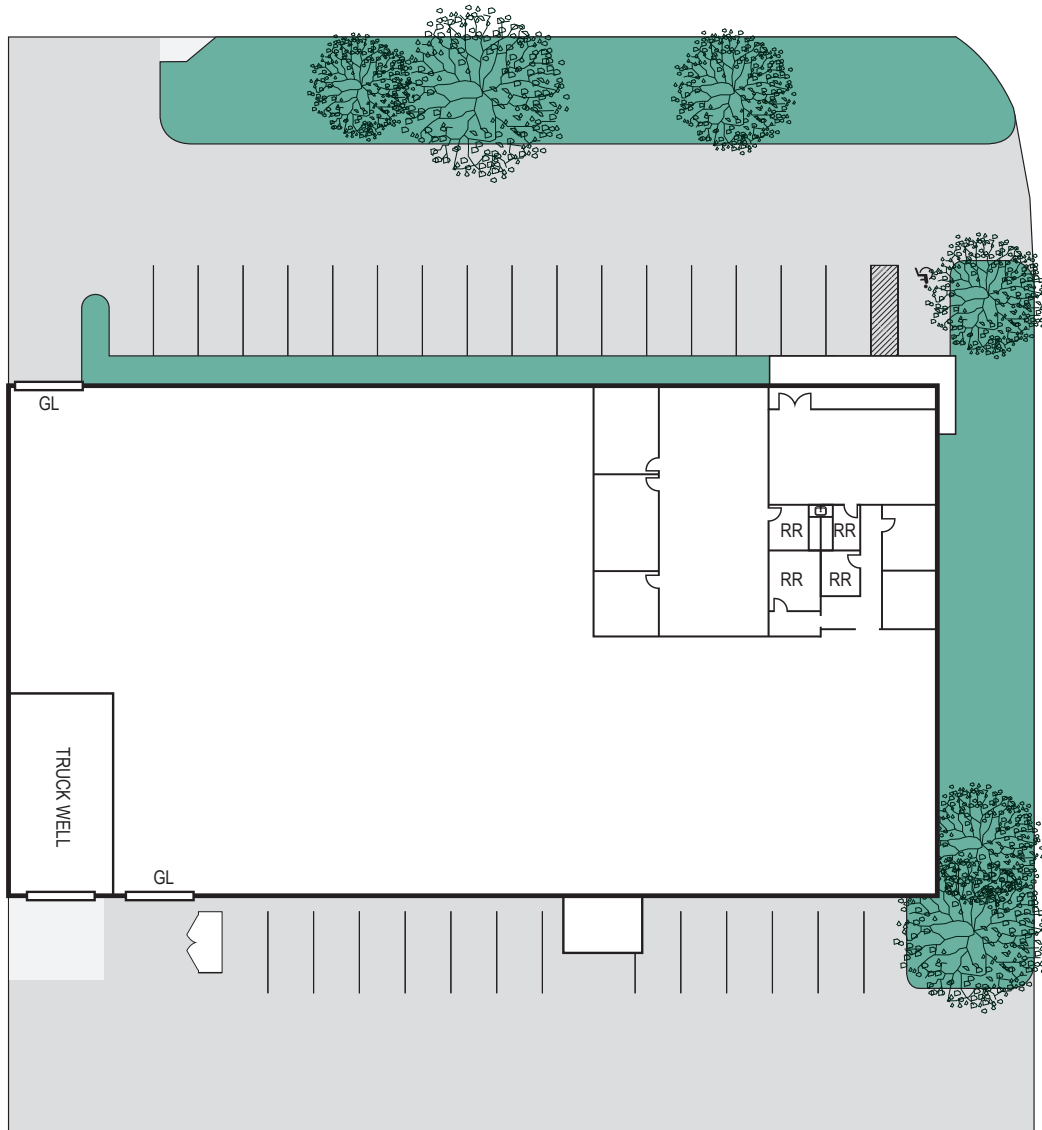
# FOR LEASE

±18,104 Square Feet

2300 E. Valencia Drive, Fullerton

## Site Plan

E VALENCIA DR.



**Mike Hefner, SIOR**  
Executive Vice President  
714.935.2331  
mhefner@voitco.com  
Lic #00857352

**Voit**  
REAL ESTATE SERVICES

2400 E. Katella Ave., Suite 750, Anaheim, CA 92806 • 714.978.7880 • 714.978.9431 Fax • Lic #01333376 | www.voitco.com