



# 1040

N. OLIVE STREET, UNIT A  
ANAHEIM, CALIFORNIA

FOR LEASE  
± 17,800 SF  
INDUSTRIAL BUILDING

**Voit**  
REAL ESTATE SERVICES



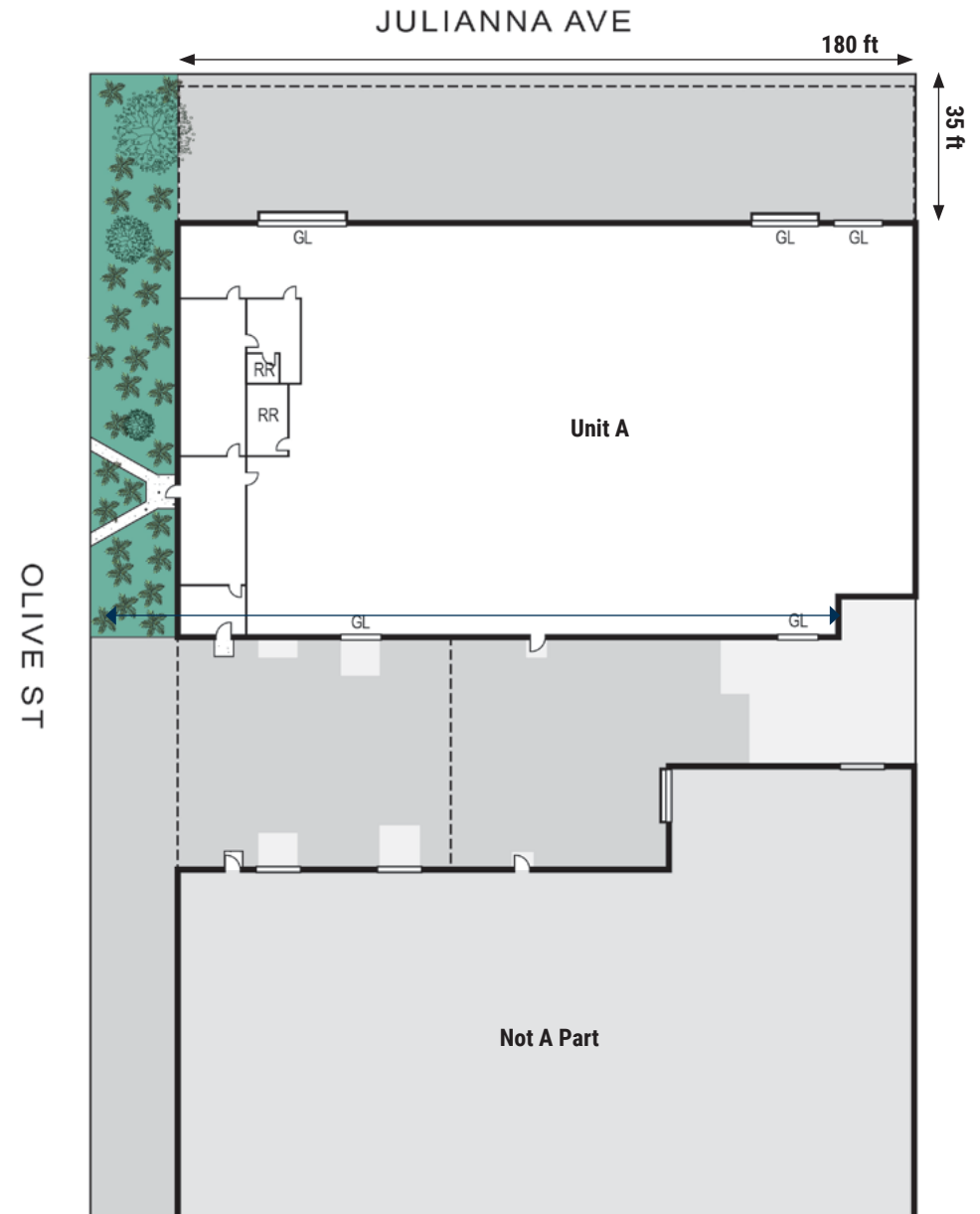
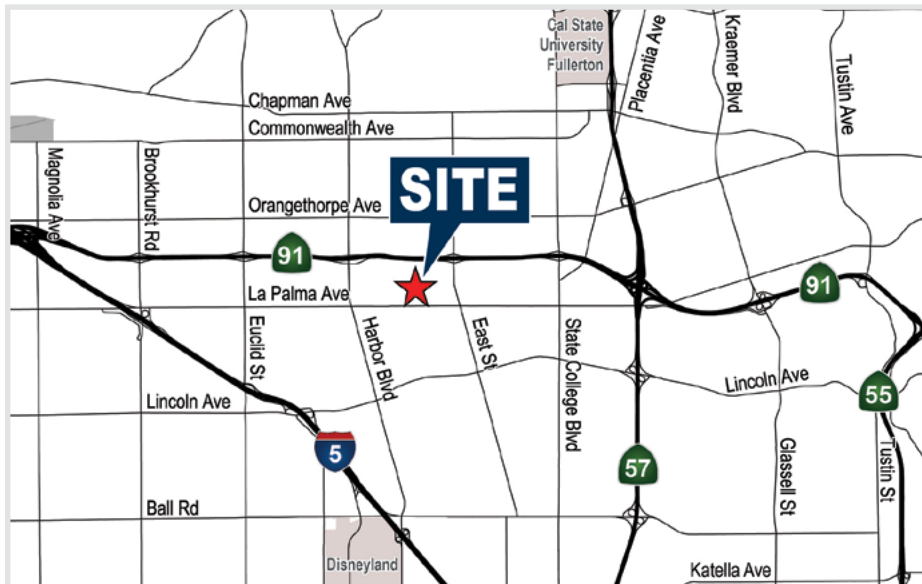
HEFNER  
VERNICK  
TEAM

# FOR LEASE

# 1040 N. OLIVE ST., UNIT A ANAHEIM, CALIFORNIA

## BUILDING FEATURES

- ±17,800 Sq. Ft. Industrial Building
- ±1,500 Sq. Ft. of Office Space
- ±12' - 13' Clear Height
- Five (5) Ground Level Loading Doors
- Two (2) Dock High Loading Positions
- 3-Phase, 240 Volt, 400 Amps of Power (Verify)
- Sprinklered
- Fenced Yard
- Close Proximity to the Riverside (91), Pomona (57) and Santa Ana (5) Freeways



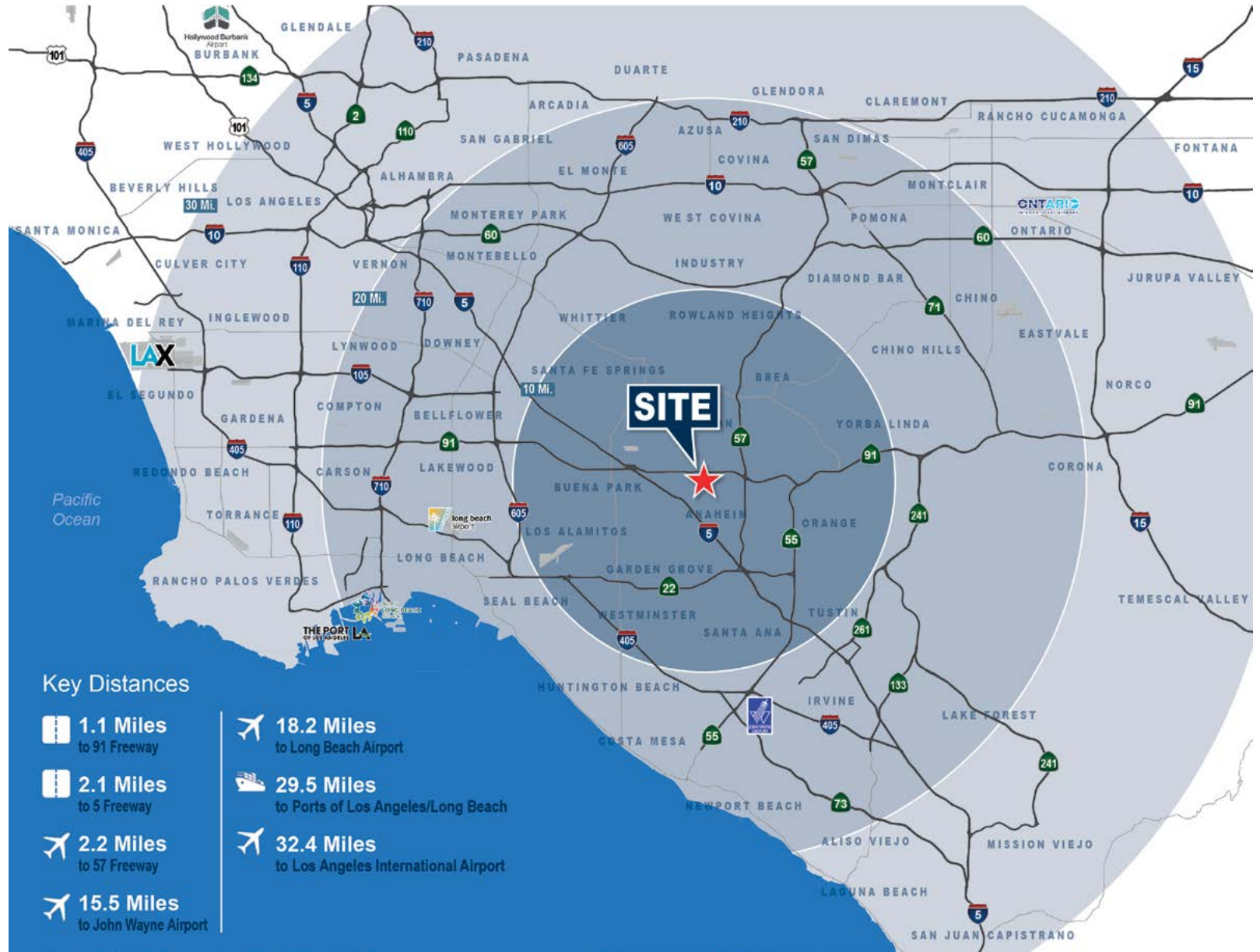
# FOR LEASE

1040 N. OLIVE ST., UNIT A  
ANAHEIM, CALIFORNIA



# FOR LEASE

# 1040 N. OLIVE ST., UNIT A ANAHEIM, CALIFORNIA



# 1040

N. OLIVE STREET, UNIT A  
ANAHEIM, CALIFORNIA

## BRENDEN HEFNER

Senior Associate  
714.935.2326  
bhefner@voitco.com  
Lic #02114046

## NICHOLAS DIGIOVANNI

Associate  
714.935.2350  
ndigiovanni@voitco.com  
Lic #02213131

**Voit**  
REAL ESTATE SERVICES



Licensed as Real Estate Salespersons by the DRE. The information contained herein has been obtained from sources we deem reliable. While we have no reason to doubt its accuracy, we do not guarantee it.  
©2024 Voit Real Estate Services, Inc. All Rights Reserved. Lic. #01991785